



HOTLINE
17632



پیرلا ہاؤس

REDEFINING LUXURY LIVING COMMUNITIES

people *of* perla



OWN A LIFE STYLE



WHATEVER YOU NEED, WHENEVER YOU WANT.

That's the quiet promise behind Perla Heights... a home that doesn't just hold your life, but moves with it. Every apartment is a peaceful retreat above the city, where mornings open to light and calm, and nights settle into a rhythm of comfort... thoughtful layouts, refined finishes, and the ease of having everything so close.....

This is living designed around how you actually live.

Step outside your door, and life unfolds effortlessly. Your office is just a short walk away, a café downstairs, a clinic an elevator ride up. Every need within reach, every moment balanced between privacy and possibility.

Because true luxury isn't in what you own. It's in how it feels to belong.

At Perla Heights, you don't just have a home... you **own a lifestyle.**



A LANDMARK IN THE MAKING

Every city has its turning point... the moment it begins to imagine itself differently.

For Zagazig, that moment is **Perla Heights.**

Here, living is not divided into separate places. Homes, workplaces, healthcare, lifestyle amenities, and leisure spaces rise together in one flowing rhythm.



And every vision that shapes a lifestyle begins with the power that drives it.



Perla Properties was founded through the alliance of five companies, uniting their expertise to create a powerhouse in mega real estate development projects – bringing together decades of experience and a legacy of excellence. Perla Heights embodies their unwavering commitment to quality, precision, and lasting value, setting a new standard for urban living in Egypt.



At the Crossroads of a Growing City



Every landmark begins with where it stands.
Perla Heights rises on Tariq Al-Ahrar, the avenue where Zagazig's
energy moves fastest and its future shines brightest.
This is not just a point on the map – it is a pulse.

A place where the city's movement gathers:

Education: schools and universities only minutes away.

Healthcare: hospitals and clinics close at hand.

Connectivity: major transport links ensuring effortless access.

Everyday living: shopping, dining, and services surrounding the project.

From here, life feels balanced. Everything essential is within reach, yet
the elevation of Perla Heights lifts it beyond the ordinary – giving
residents the advantage of convenience without losing the luxury of
space and privacy.

To live here is to stand at the city's center of growth, and to rise with it.

From this heart of movement, the master plan of Perla Heights
takes form – a city within a city.

Mit Ghamr - Zagazig Rd

Mansoura - Zagazig Rd

Zagazig
Stadium

Zagazig
University

Sharkya
sporting club

Government
office

Banha - Zagazig Rd

El Fouad
International
language school

El-Ahrar Rd

Traffic Station
El Zaqaqiz

Belbeis - Zagazig Rd

City Mall

Al Ahrar Station

Al Ahrar Hospital



Where Life Finds Its Rhythm

Perla Heights is a city within a city, where every tower, floor, and space plays its part in the story of daily life.

Standing-alone Tower: Hosts one floor of medical care, two floors of commercial spaces for cafés, shops, and lifestyle services, and remaining floors dedicated to residential apartments – private sanctuaries above the city’s pulse.

Two Connected Buildings: Each rises with two commercial floors offering food, beverage, and lifestyle services. Above, one building hosts serviced offices, and the other rises with clinics, extending healthcare across the community.

Unit Types: Residences and mixed-use units blend comfort, functionality, and elegance for every lifestyle.

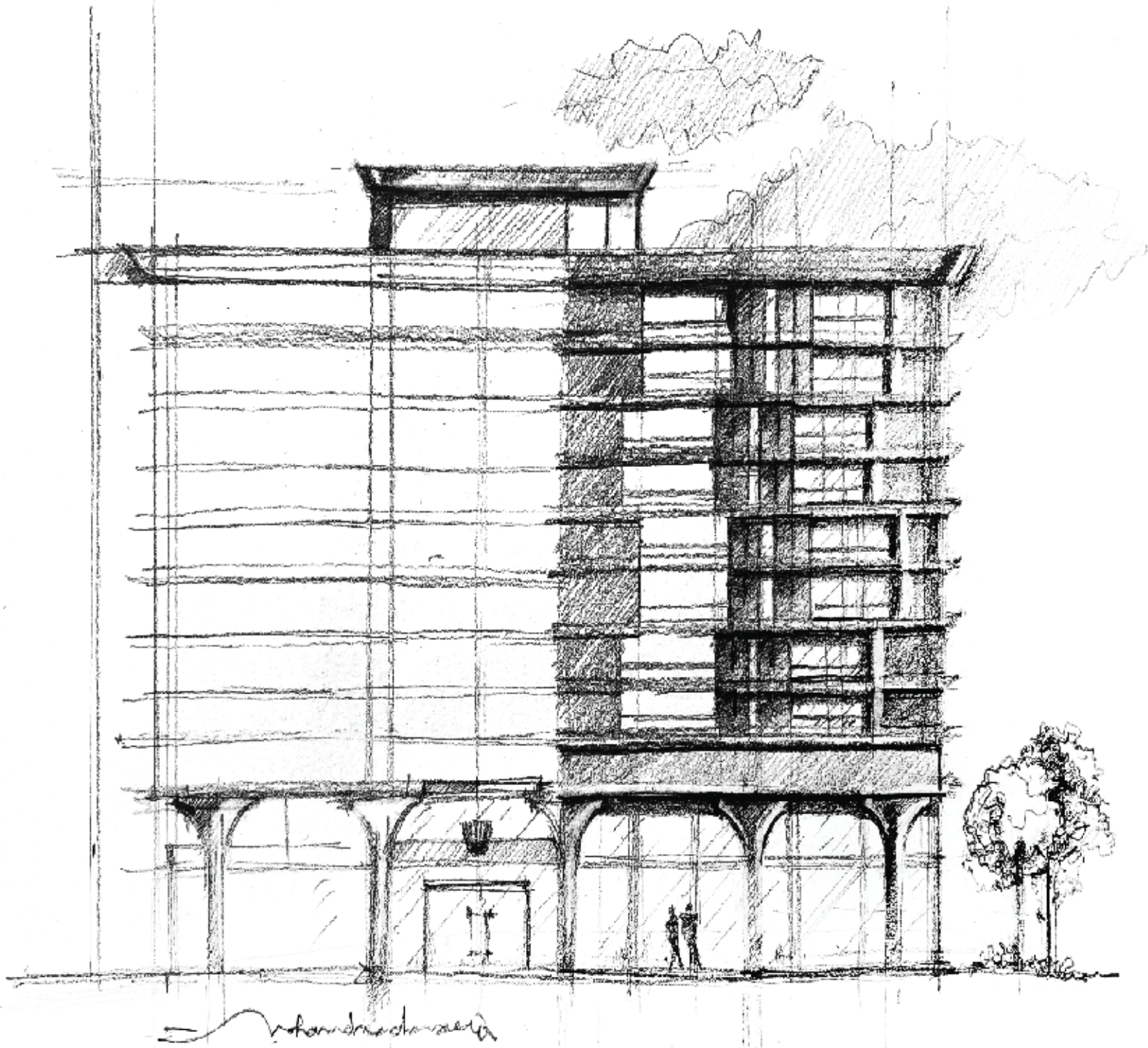
Every floor and every connection is designed not merely for living, but for the seamless flow of life – where work, care, leisure, and home coexist in harmony.

Every layer tells a story, and together they create more than a building.


They create a legacy!



Introducing The **PERLA HEIGHTS**







**And within this harmony, each space begins to speak,
creating a dialogue that brings the story to life.**



Spaces in Conversation

Commercial floors: vibrant shops, cafés, and lifestyle services

Administrative & serviced offices: flexible, modern workspaces

Medical floors: accessible clinics and healthcare services

Residential floors: peaceful apartments with thoughtful layouts and refined finishes

Here, every space speaks to the other, creating a rhythm where life flows naturally from home to work, to care, to leisure.

people*of*perla





HEIGHTS

KRISPY KREME

HEIGHTS

KFC

PAPA JOHN'S







Residences with Complete Lifestyle Access Living Above It All





COSTA COFFE

COSTA COFFE

PAPA JOHN'S

KRISPY KREME

KRISPY KREME

PAPA JOHN'S





PERLA
HEIGHTS

mori sushi

DORZ

Zanilli's

Zanilli's

DORZ

STARBUCKS

mori sushi



PAPA JOHN'S

COSTA COFFE

PAUL

DONUTS

KRISPY KREME

PAUL

DONUTS

COSTA COFFE

KRISPY KREME

KFC



And when these spaces intertwine, they shape a complete plan – one
.that carries the promise of daily life elevated

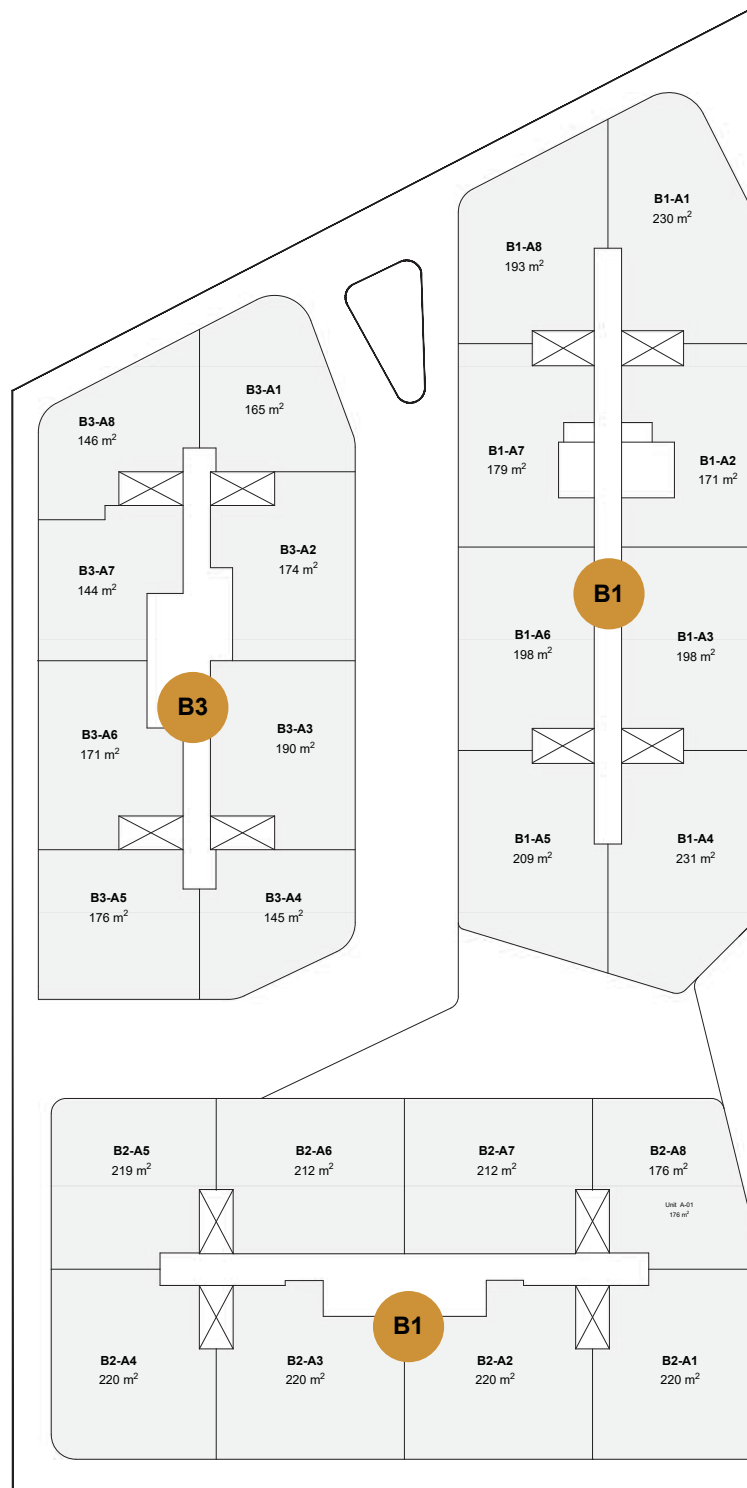
Every apartment is a canvas for modern living, thoughtful layouts,
.refined finishes, and effortless access to amenities

From sunrise in light-filled spaces to evenings spent in cafés or
enjoying nearby services, residents experience a life that is calm,
.elegant, and fully connected



And so the story comes full circle – from roots and vision, to a landmark ready for generations.

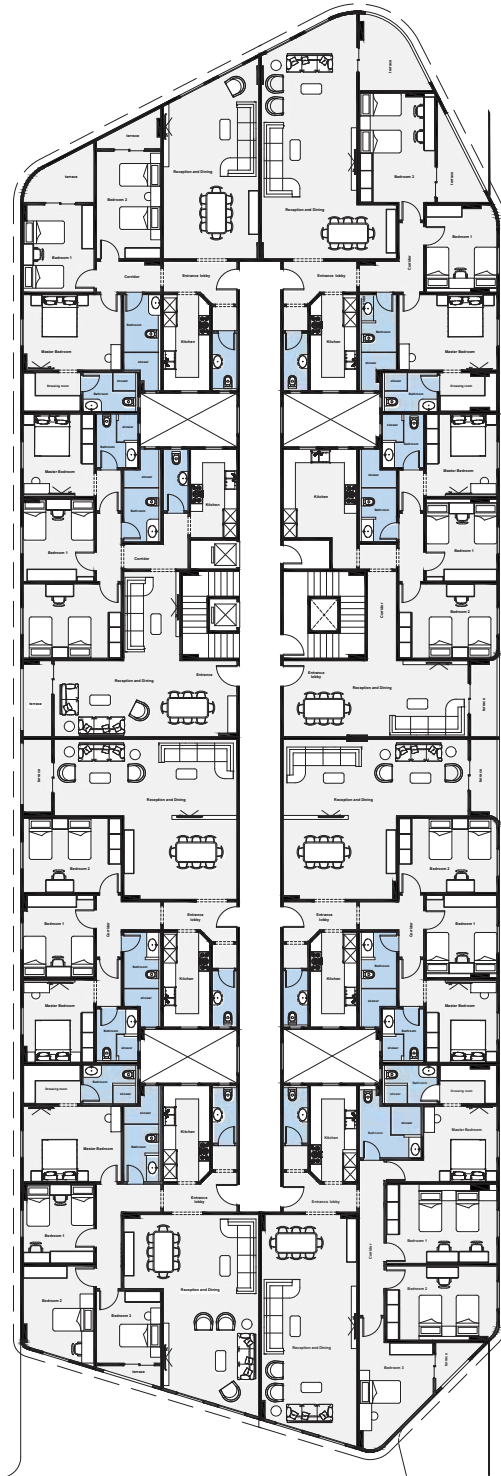
people *of* perla



B1

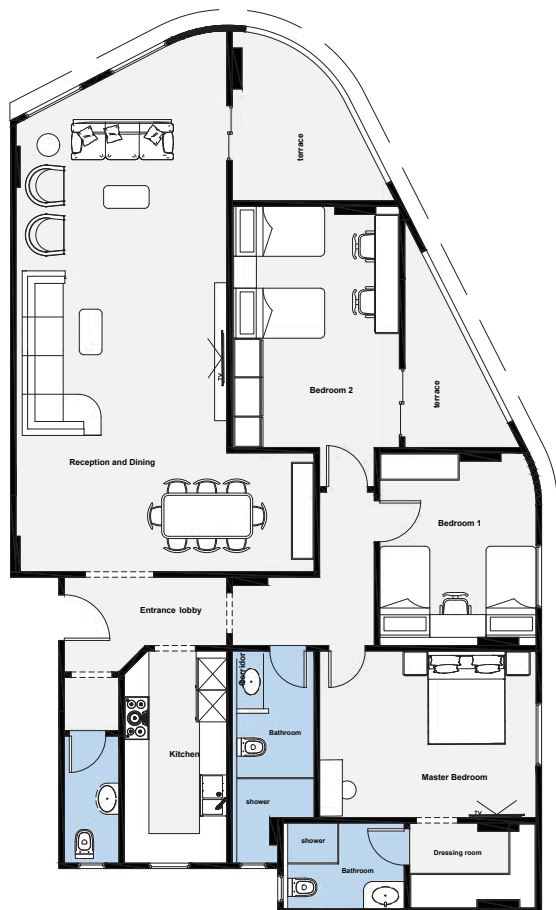
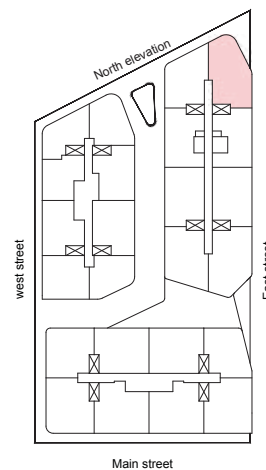
Specifications

Plan Type	Residential Apartment
Unit Code	R-FT-B1 -A1-8
Location	Block-1 Typical floors



Specifications

Unit Type	Residential Apartment
Unit Code	R-FT-B1-A1
Unit Area	230 m2
Location	Block-1 Typical floors

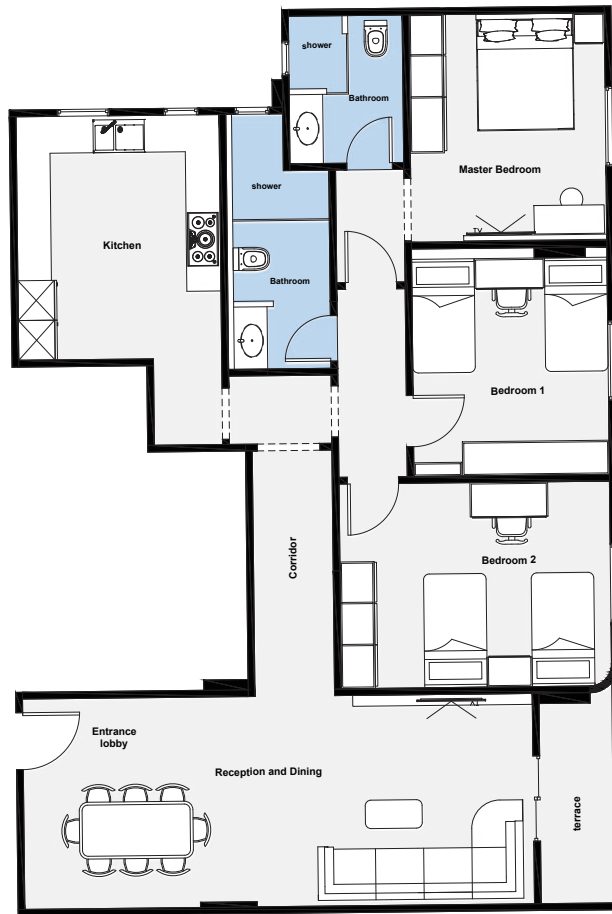
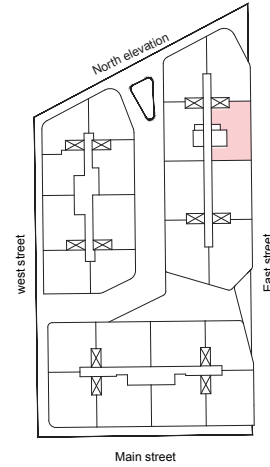


Spaces dimensions

- 1 Reception and Dining Ⓢ 9.85m x 4.63m
2.60m x 1.91m
- 2 Master Bedroom Ⓢ 4.76m x 3.66m
- 3 Master Bathroom Ⓢ 2.66m x 1.88m
- 4 Dressing room Ⓢ 2.78m x 1.88m
- 5 Bedroom 1 Ⓢ 4.23m x 3.44m
- 6 Bedroom 2 Ⓢ 5.30m x 3.67m
- 7 Bathroom Ⓢ 3.66m x 1.80m
- 8 Kitchen Ⓢ 4.66m x 2.25m
- 9 Guest Bathroom Ⓢ 2.80m x 1.20m
- 10 Entrance Lobby Ⓢ 3.60m x 1.50m

Specifications

Unit Type	Residential Apartment
Unit Code	R-FT-B1-A2
Unit Area	171 m2
Location	Block-1 Typical floors

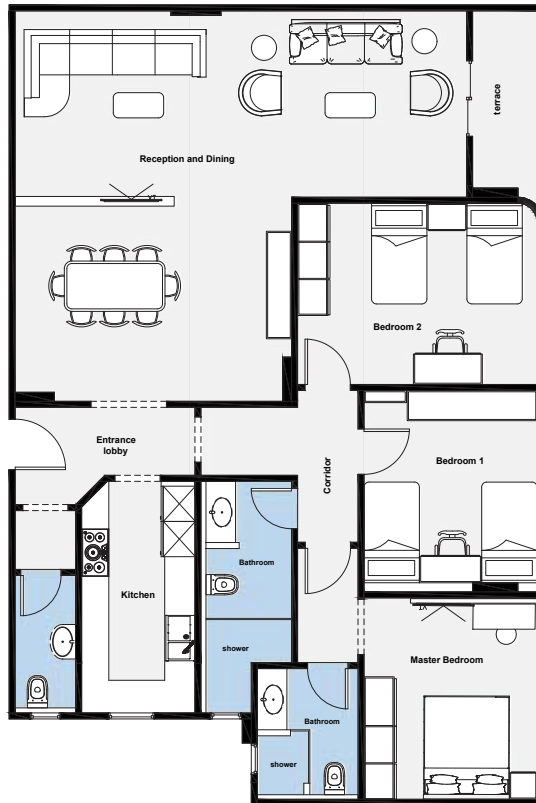
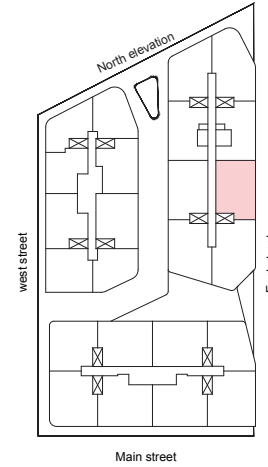


Spaces dimensions

- 1 Reception and Dining @ 9.00m X 3.70m
- 2 Master Bedroom @ 4.00m X 3.44m
- 3 Master Bathroom @ 2.60m X 2.00m
- 4 Bedroom 1 @ 4.00m X 3.44m
- 5 Bedroom 2 @ 4.76m X 3.60m
- 6 Bathroom @ 3.60m X 1.80m
- 7 Kitchen @ 4.30m X 3.60m

Specifications

Unit Type	Residential Apartment
Unit Code	R-FT-B1-A3
Unit Area	198 m2
Location	Block-1 Typical floors

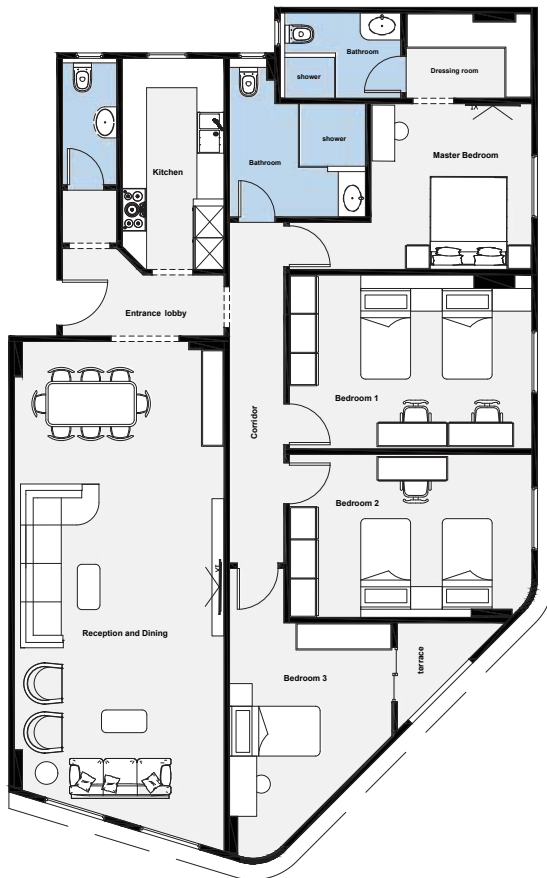
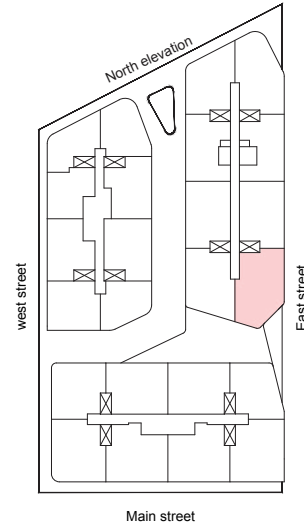


Spaces dimensions

- 1 Reception and Dining Ⓢ 9.00m X 3.70m
5.50m X 4.00m
- 2 Master Bedroom Ⓢ 4.00m X 3.44m
- 3 Master Bathroom Ⓢ 2.60m X 2.00m
- 4 Bedroom 1 Ⓢ 4.00m X 3.44m
- 5 Bedroom 2 Ⓢ 4.76m X 3.60m
- 6 Bathroom Ⓢ 3.60m X 1.80m
- 7 Kitchen Ⓢ 4.60m X 2.25m
- 8 Guest Bathroom Ⓢ 2.75m X 1.20m
- 9 Entrance Lobby Ⓢ 3.60m X 1.35m

Specifications

Unit Type	Residential Apartment
Unit Code	R-FT-B1-A4
Unit Area	231 m2
Location	Block-1 Typical floors

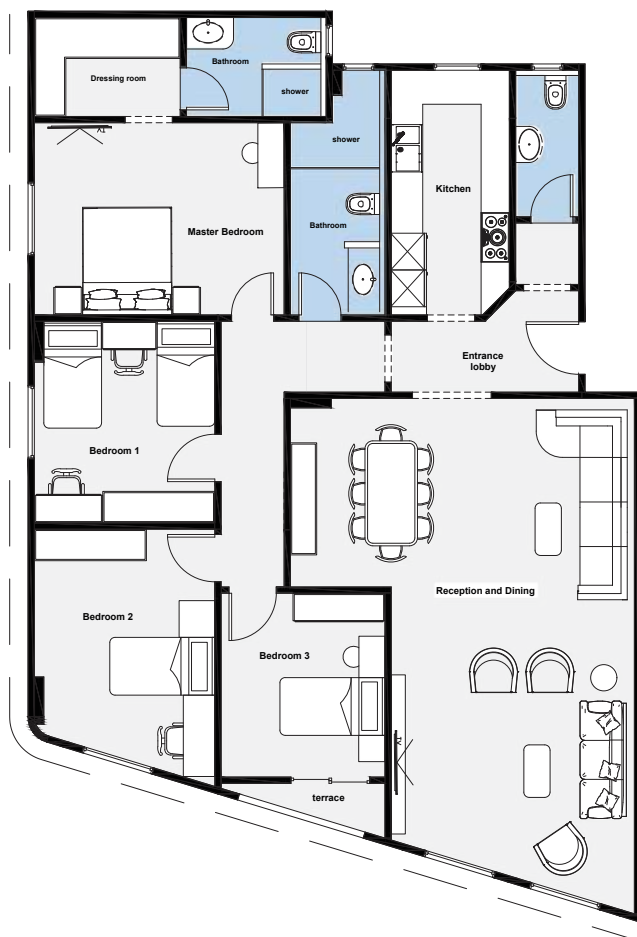
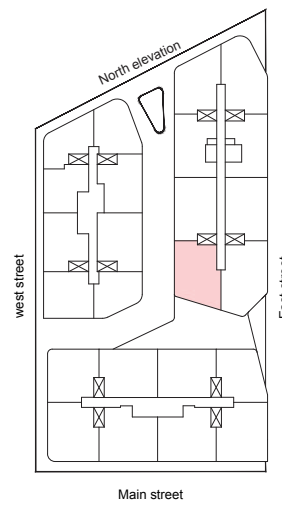


Spaces dimensions

- 1 Reception and Dining @ 10.50m X 4.63m
- 2 Master Bedroom @ 3.66m X 3.56m
- 3 Master Bathroom @ 2.66m X 1.88m
- 4 Dressing room @ 2.78m X 1.88m
- 5 Bedroom 1 @ 5.36m X 3.84m
- 6 Bedroom 2 @ 5.36m X 3.60m
- 7 Bedroom 3 @ 4.00m X 3.60m
- 8 Bathroom @ 3.00m X 2.50m
- 9 Kitchen @ 4.66m X 2.25m
- 10 Guest Bathroom @ 2.85m X 1.25m
- 11 Entrance Lobby @ 3.60m X 1.35m

Specifications

Unit Type	Residential Apartment
Unit Code	R-FT-B1-A5
Unit Area	209 m2
Location	Block-1 Typical floors

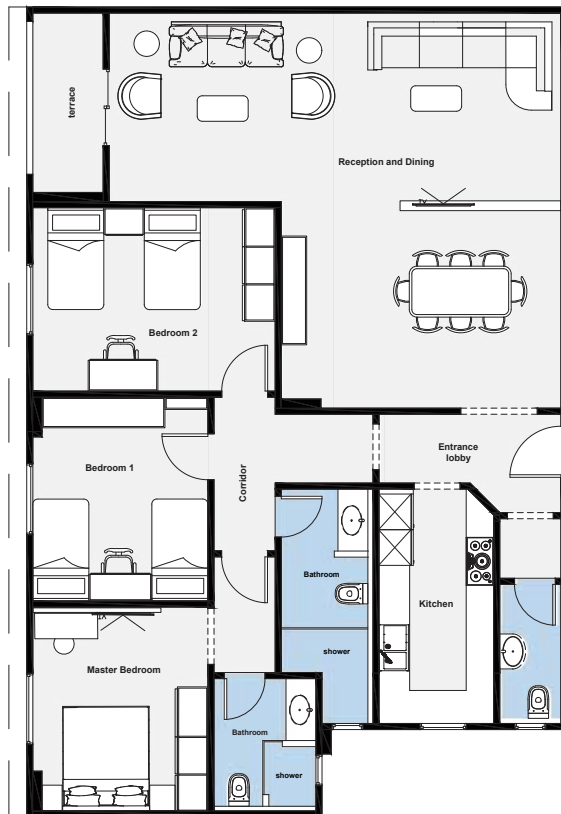
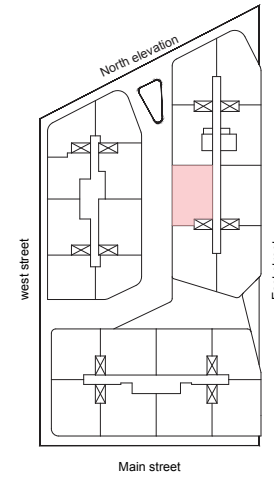


Spaces dimensions

- Reception and Dining** ⑨ 9.10m X 4.63m
3.60m X 1.92m
- Master Bedroom** ⑩ 4.76m X 3.56m
- Master Bathroom** ⑪ 2.66m X 1.88m
- Dressing room** ⑫ 2.78m X 1.88m
- Bedroom 1** ⑬ 3.84m X 3.44m
- Bedroom 2** ⑭ 4.00m X 3.44m
- Bedroom 3** ⑮ 3.50m X 3.12m
- Bathroom** ⑯ 3.66m X 1.80m
- Kitchen** ⑰ 4.66m X 2.25m
- Guest Bathroom** ⑱ 2.80m X 1.20m
- Entrance Lobby** ⑲ 3.60m X 1.35m

Specifications

Unit Type	Residential Apartment
Unit Code	R-FT-B1-A6
Unit Area	198 m2
Location	Block-1 Typical floors

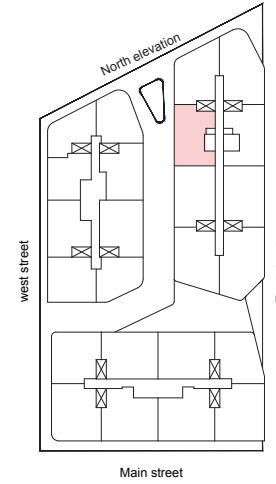


Spaces dimensions

- Reception and Dining** 9.00m X 3.70m
5.50m X 4.00m
- Master Bedroom** 4.00m X 3.44m
- Master Bathroom** 2.60m X 2.00m
- Bedroom 1** 4.00m x 3.44m
- Bedroom 2** 4.76m X 3.60m
- Bathroom** 3.60m X 1.80m
- Kitchen** 4.60m X 2.25m
- Guest Bathroom** 2.75m X 1.20m
- Entrance Lobby** 3.6m X 1.35m

Specifications

Unit Type	Residential Apartment
Unit Code	R-FT-B1-A7
Unit Area	179 m2
Location	Block-1 Typical floors

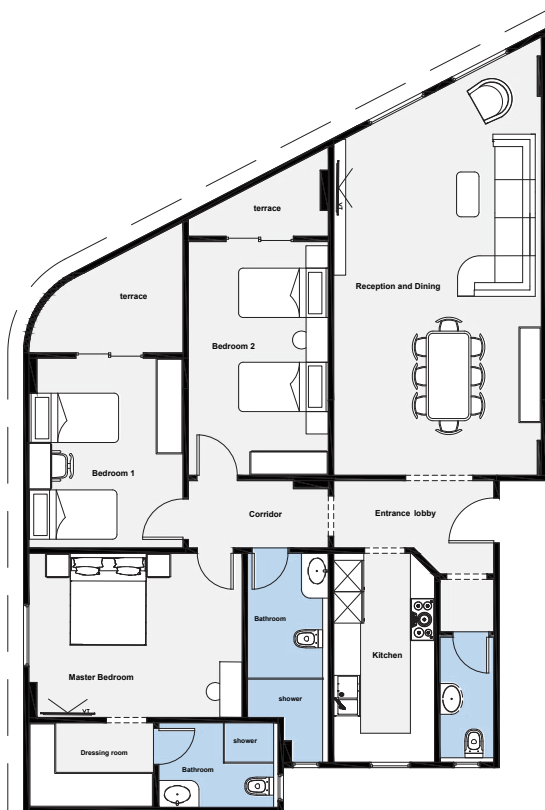
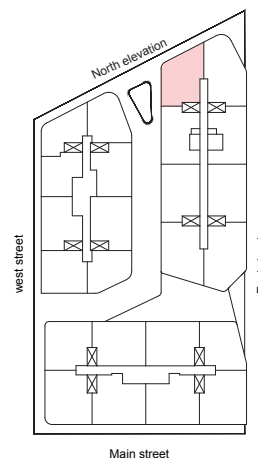


Spaces dimensions

- Reception and Dining** 8.87m * 3.70m
4.32m * 2.72m
- Master Bedroom** 4.00m * 3.44m
- Master Bathroom** 2.60m * 2.00m
- Bedroom 1** 4.00m x 3.44m
- Bedroom 2** 4.75m * 3.60m
- Bathroom** 3.48m * 1.80m
- Kitchen** 4.28m * 2.25m
- Guest Bathroom** 3.00m * 1.20m

Specifications

Unit Type	Residential Apartment
Unit Code	R-FT-B1-A8
Unit Area	193 m2
Location	Block-1 Typical floors



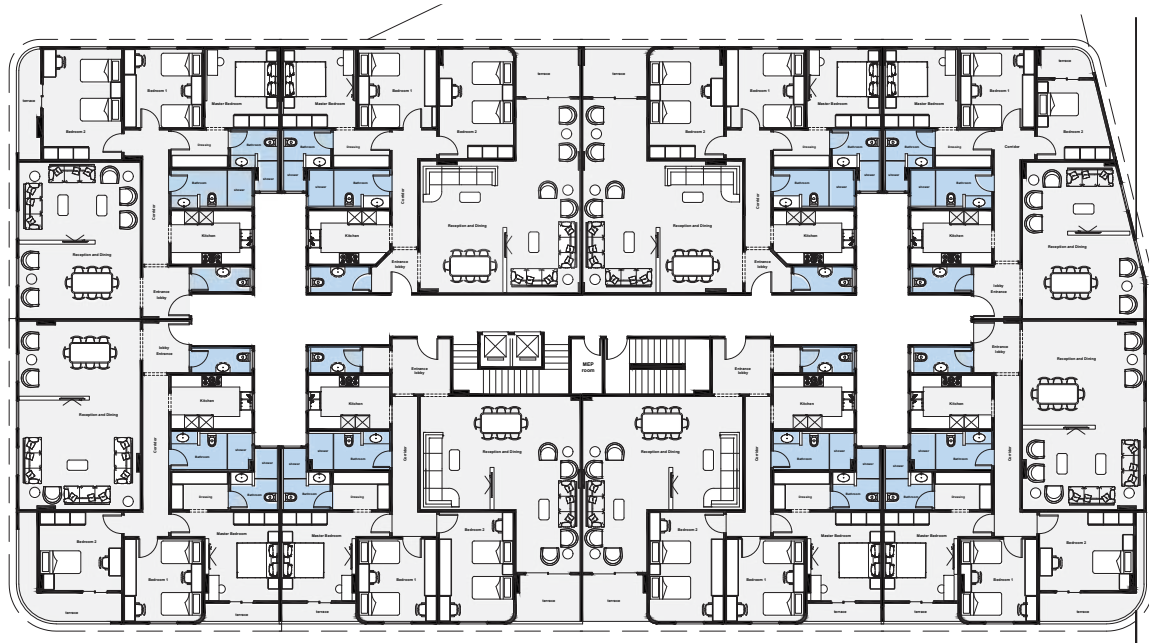
Spaces dimensions

- 1 **Reception and Dining** @ 8.70m x 4.63m
- 2 **Master Bedroom** @ 4.76m x 3.66m
- 3 **Master Bathroom** @ 2.66m x 1.88m
- 4 **Dressing room** @ 2.78m x 1.88m
- 5 **Bedroom 1** @ 4.23m x 3.44m
- 6 **Bedroom 2** @ 5.21m x 3.12m
- 7 **Bathroom** @ 3.66m x 1.80m
- 8 **Kitchen** @ 4.66m x 2.25m
- 9 **Guest Bathroom** @ 2.80m x 1.20m
- 10 **Entrance Lobby** @ 3.60m x 1.50m

B2

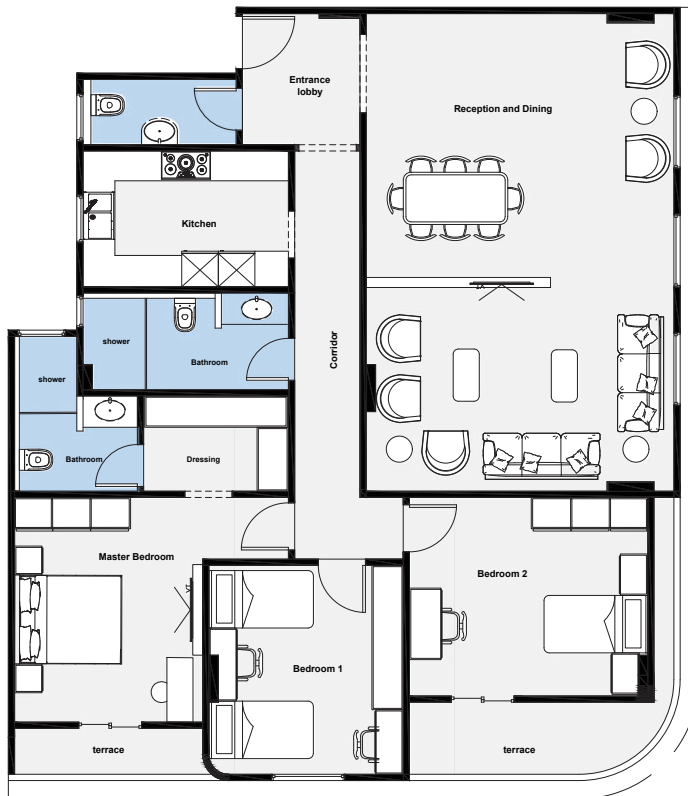
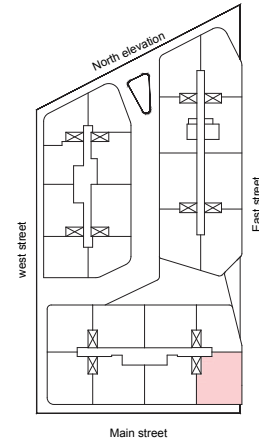
Specifications

Plan Type	Residential Apartment
Unit Code	R-FT-B2-A1-8
Location	Block-2 Typical floors



Specifications

Unit Type	Residential Apartment
Unit Code	R-FT-B2-A1
Unit Area	220 m2
Location	Block-1 Typical floors

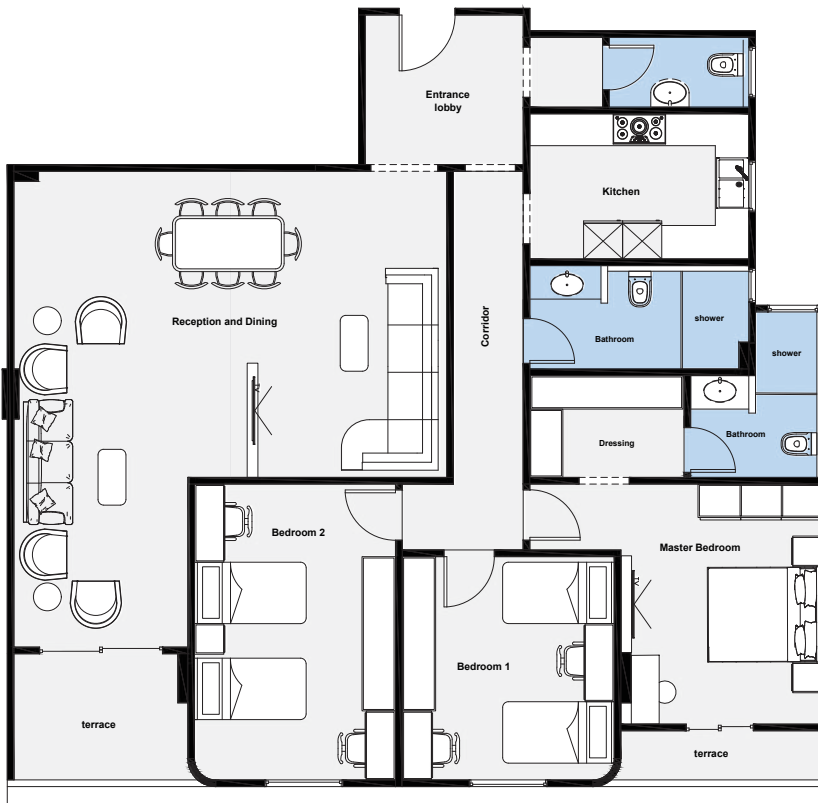
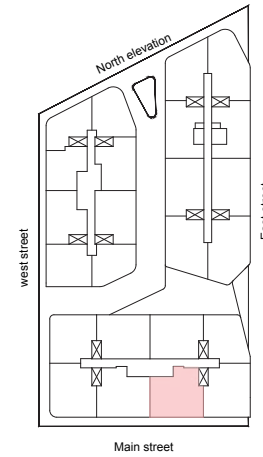


Spaces dimensions

- Reception and Dining** ⑨ 9.17m x 5.90m
- Master Bedroom** ⑨ 4.30m x 3.60m
- Master Bathroom** ⑨ 2.38m x 1.82m
1.20m x 1.15m
- Dressing room** ⑨ 2.75m x 1.82m
- Bedroom 1** ⑨ 4.00m x 3.72m
- Bedroom 2** ⑨ 4.56m x 3.60m
- Bathroom** ⑨ 3.93m x 1.85m
- Kitchen** ⑨ 3.93m x 2.60m
- Guest Bathroom** ⑨ 2.93m x 1.25m
- Entrance Lobby** ⑨ 2.50m x 2.25m

Specifications

Unit Type	Residential Apartment
Unit Code	R-FT-B2-A2
Unit Area	220 m2
Location	Block-1 Typical floors

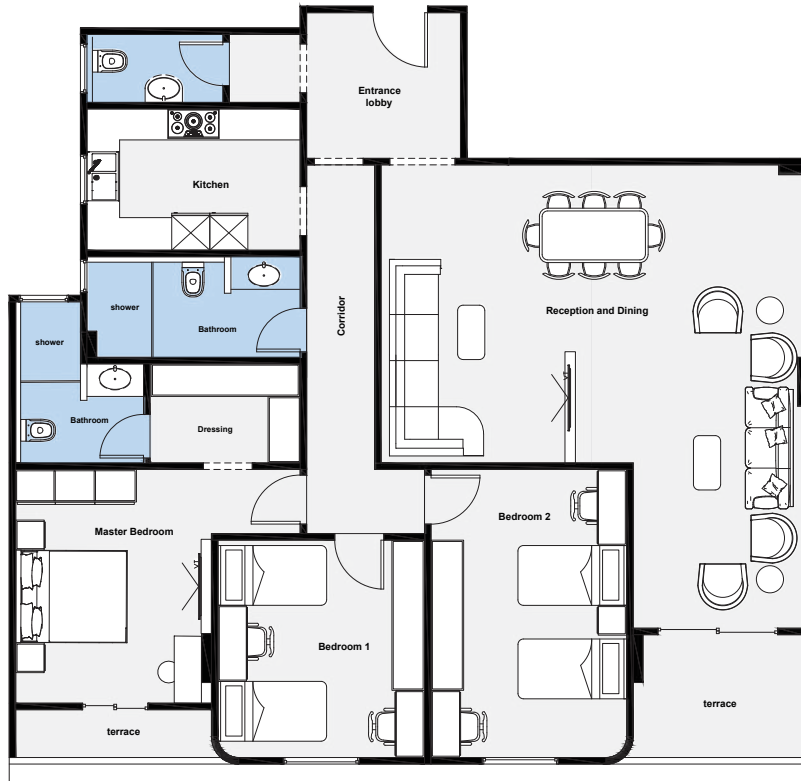
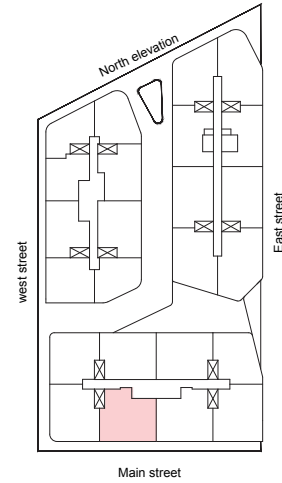


Spaces dimensions

- 1 Reception and Dining @ 7.75m x 5.50m
3.10m x 3.05m
- 2 Master Bedroom @ 4.30m x 3.60m
- 3 Master Bathroom @ 2.38m x 1.82m
1.20m x 1.15m
- 4 Dressing room @ 2.75m x 1.82m
- 5 Bedroom 1 @ 4.00m x 3.80m
- 6 Bedroom 2 @ 5.30m x 3.60m
- 7 Bathroom @ 3.93m x 1.85m
- 8 Kitchen @ 3.93m x 2.60m
- 9 Guest Bathroom @ 2.93m x 1.20m
- 10 Entrance Lobby @ 2.83m x 2.68m

Specifications

Unit Type	Residential Apartment
Unit Code	R-FT-B2-A3
Unit Area	220 m2
Location	Block-1 Typical floors

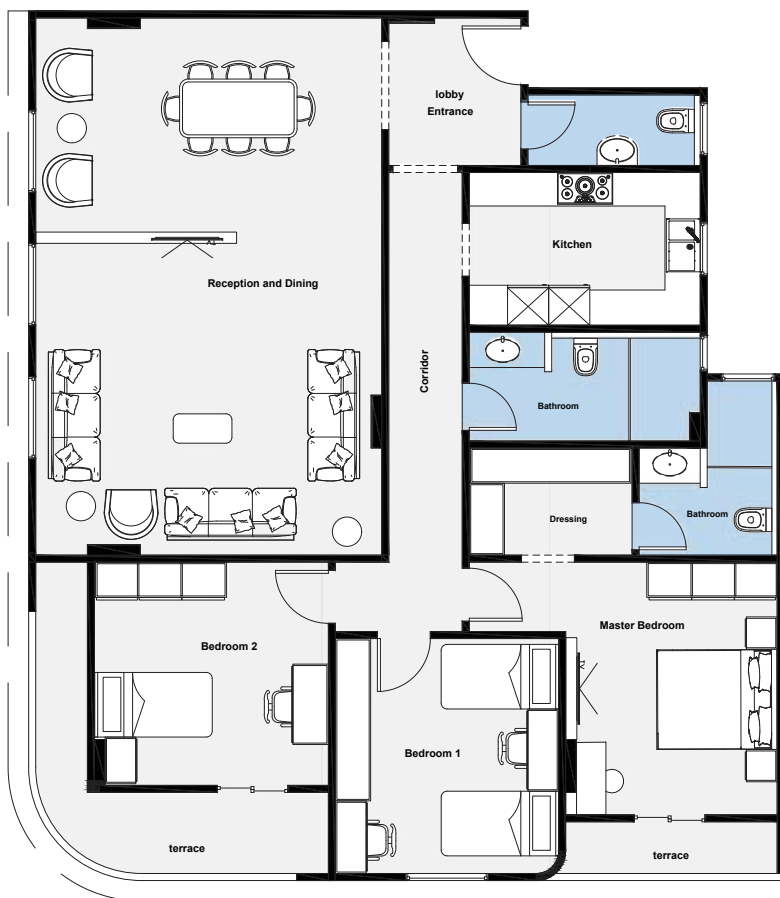
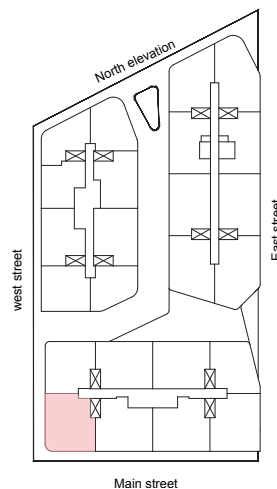


Spaces dimensions

- Reception and Dining** Ⓢ 7.75m x 5.50m
3.10m x 3.05m
- Master Bedroom** Ⓢ 4.30m x 3.60m
- Master Bathroom** Ⓢ 2.38m x 1.82m
1.20m x 1.15m
- Dressing room** Ⓢ 2.75m x 1.82m
- Bedroom 1** Ⓢ 4.00m x 3.80m
- Bedroom 2** Ⓢ 5.30m x 3.60m
- Bathroom** Ⓢ 3.93m x 1.85m
- Kitchen** Ⓢ 3.93m x 2.60m
- Guest Bathroom** Ⓢ 2.93m x 1.20m
- Entrance Lobby** Ⓢ 2.83m x 2.68m

Specifications

Unit Type	Residential Apartment
Unit Code	R-FT-B2-A4
Unit Area	220 m2
Location	Block-1 Typical floors

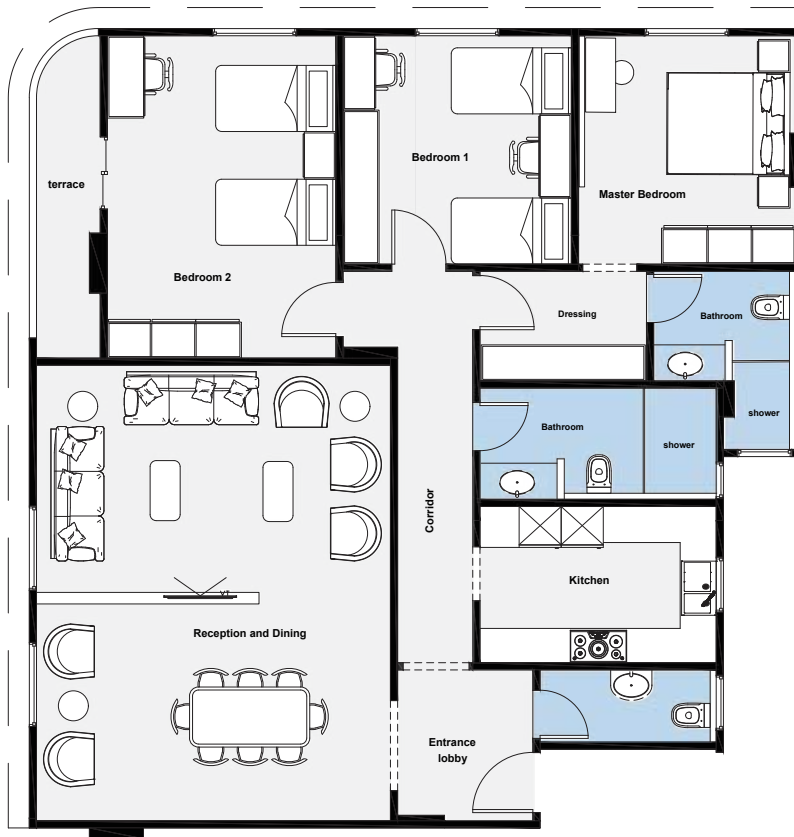
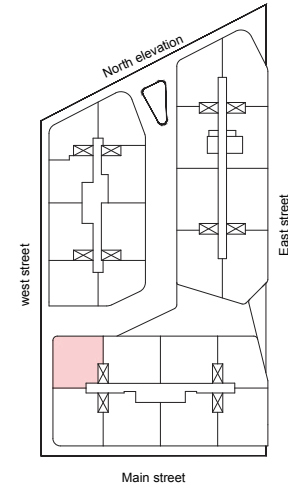


Spaces dimensions

- 1 **Reception and Dining** Ⓢ 9.14m x 5.90m
- 2 **Master Bedroom** Ⓢ 4.30m x 3.60m
- 3 **Master Bathroom** Ⓢ 2.38m x 1.82m
1.20m x 1.15m
- 4 **Dressing room** Ⓢ 2.75m x 1.82m
- 5 **Bedroom 1** Ⓢ 4.00m x 3.80m
- 6 **Bedroom 2** Ⓢ 4.00m x 3.80m
- 7 **Bathroom** Ⓢ 3.93m x 1.85m
- 8 **Kitchen** Ⓢ 3.93m x 2.60m
- 9 **Guest Bathroom** Ⓢ 2.93m x 1.20m
- 10 **Entrance Lobby** Ⓢ 2.50m x 2.25m

Specifications

Unit Type	Residential Apartment
Unit Code	R-FT-B2-A5
Unit Area	219 m2
Location	Block-1 Typical floors

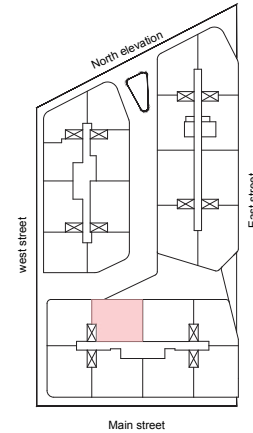


Spaces dimensions

- 1 **Reception and Dining** @ 7.60m x 5.90m
- 2 **Master Bedroom** @ 3.80m x 3.60m
- 3 **Master Bathroom** @ 2.38m x 1.82m
1.20m x 1.15m
- 4 **Dressing room** @ 2.75m x 1.82m
- 5 **Bedroom 1** @ 3.80m x 3.60m
- 6 **Bedroom 2** @ 5.36m x 3.80m
- 7 **Bathroom** @ 3.93m x 1.85m
- 8 **Kitchen** @ 3.93m x 2.60m
- 9 **Guest Bathroom** @ 2.93m x 1.20m
- 10 **Entrance Lobby** @ 2.50m x 2.25m

Specifications

Unit Type	Residential Apartment
Unit Code	R-FT-B2-A6
Unit Area	212 m2
Location	Block-1 Typical floors

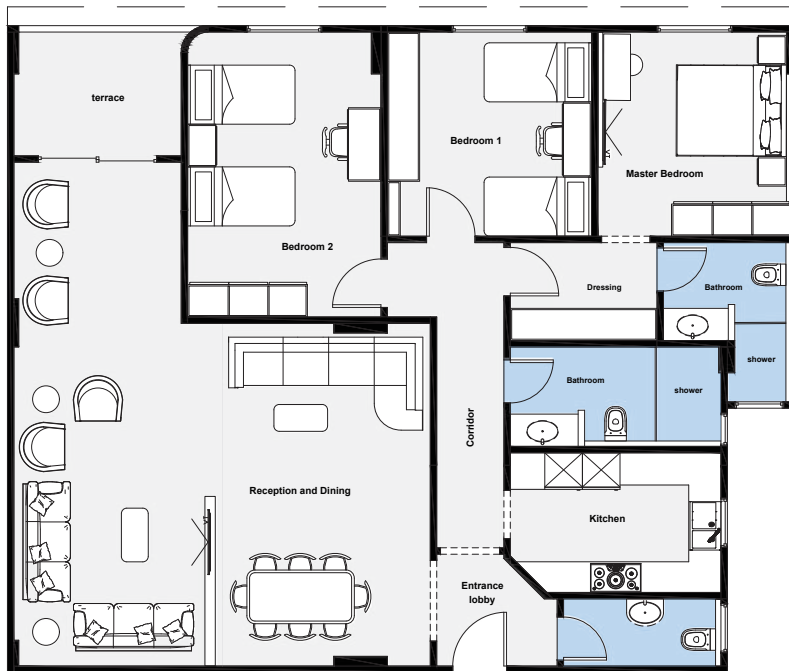
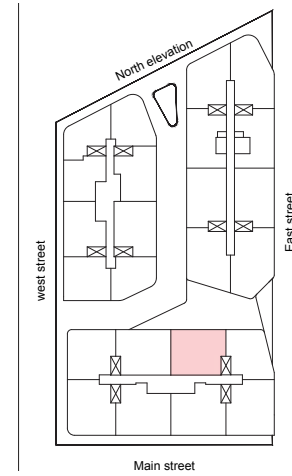


Spaces dimensions

- 1 Reception and Dining Ⓢ 7.75m x 6.38m
3.11m x 3.00m
- 2 Master Bedroom Ⓢ 3.80m x 3.60m
- 3 Master Bathroom Ⓢ 2.38m x 1.82m
1.20m x 1.15m
- 4 Dressing room Ⓢ 2.75m x 1.82m
- 5 Bedroom 1 Ⓢ 3.80m x 3.80m
- 6 Bedroom 2 Ⓢ 5.30m x 3.60m
- 7 Bathroom Ⓢ 3.92m x 1.85m
- 8 Kitchen Ⓢ 3.92m x 2.60m
- 9 Guest Bathroom Ⓢ 2.93m x 1.25m
- 10 Entrance Lobby Ⓢ 2.25m x 2.08m

Specifications

Unit Type	Residential Apartment
Unit Code	R-FT-B2-A7
Unit Area	212 m2
Location	Block-1 Typical floors

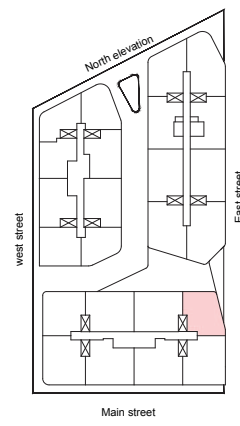


Spaces dimensions

- 1 Reception and Dining Ⓢ 7.75m x 6.38m
3.11m x 3.00m
- 2 Master Bedroom Ⓢ 3.80m x 3.60m
- 3 Master Bathroom Ⓢ 2.38m x 1.82m
1.20m x 1.15m
- 4 Dressing room Ⓢ 2.75m x 1.82m
- 5 Bedroom 1 Ⓢ 3.80m x 3.80m
- 6 Bedroom 2 Ⓢ 5.30m x 3.60m
- 7 Bathroom Ⓢ 3.92m x 1.85m
- 8 Kitchen Ⓢ 3.92m x 2.60m
- 9 Guest Bathroom Ⓢ 2.93m x 1.25m
- 10 Entrance Lobby Ⓢ 2.25m x 2.08m

Specifications

Unit Type	Residential Apartment
Unit Code	R-FT-B2-A8
Unit Area	176 m2
Location	Block-1 Typical floors



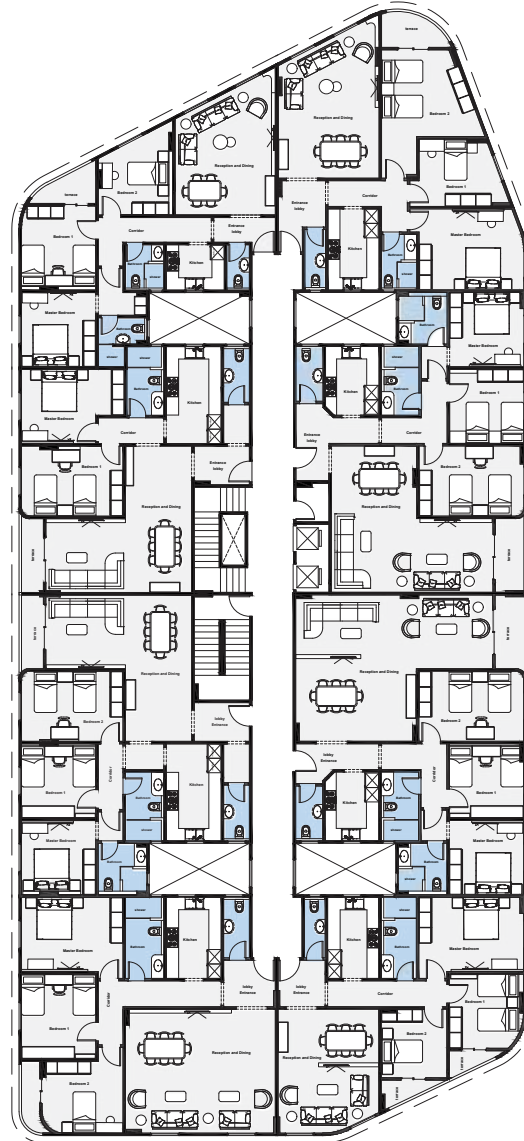
Spaces dimensions

1 Reception and Dining	⊙ 7.60m X 5.90m
2 Master Bedroom	⊙ 3.80m X 3.60m
3 Master Bathroom	⊙ 2.38mX 1.82m 1.20mX 1.15m
4 Dressing room	⊙ 2.75m X 1.82m
5 Bedroom 1	⊙ 3.80m X3.60m
6 Bedroom 2	⊙ 4.86m x 3.22m
7 Bathroom	⊙ 3.93m x 1.85m
8 Kitchen	⊙ 3.93m x2.60m
9 Guest Bathroom	⊙ 2.93m x 1.25m
7 Entrance Lobby	⊙ 2.50m x 2.25m

B3

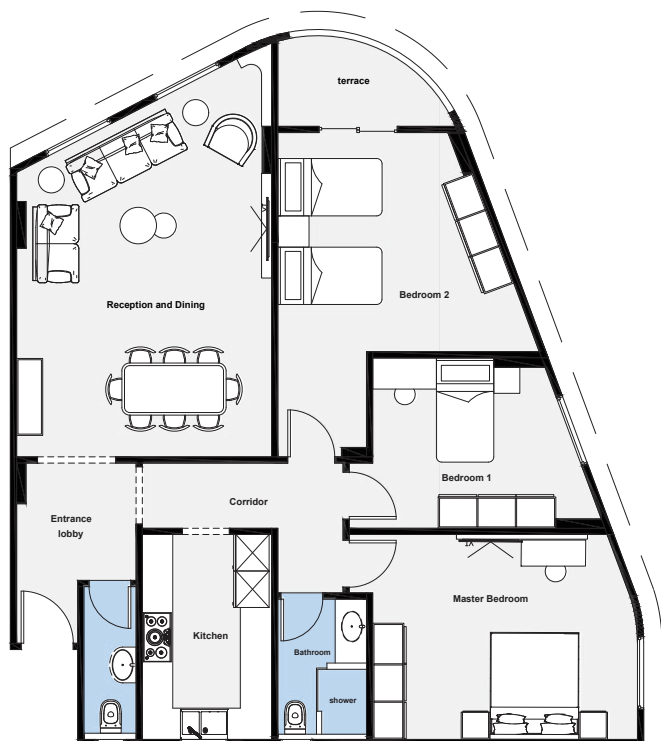
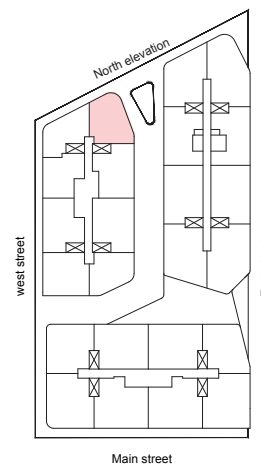
Specifications

Plan Type	Residential Apartment
Unit Code	R-FT-B3-A1-8
Location	Block-3 Typical floors



Specifications

Unit Type	Residential Apartment
Unit Code	R-FT-B3-A1
Unit Area	165 m2
Location	Block-1 Typical floors

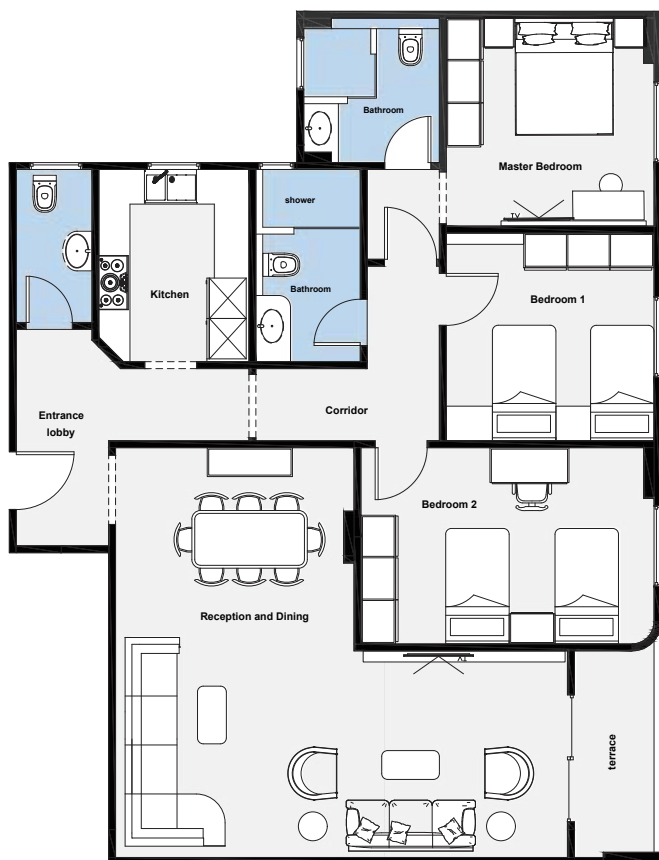
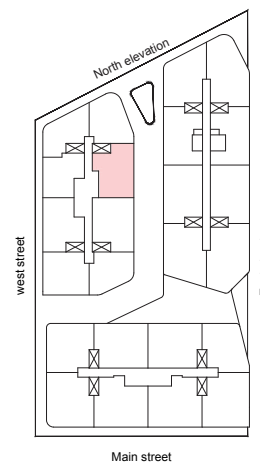


Spaces dimensions

- 1 Reception and Dining @ 4.90m X 6.60m
- 2 Master Bedroom @ 5.08m X 3.93m
- 3 Bedroom 1 @ 3.76m X 3.27m
- 4 Bedroom 2 @ 4.20m X 4.20m
- 5 Bathroom @ 2.70m X 1.70m
- 6 Kitchen @ 2.48m X 3.93m
- 7 Guest Bathroom @ 2.9m X 1.00m
- 8 Entrance Lobby @ 2.30m x2.25m

Specifications

Unit Type	Residential Apartment
Unit Code	R-FT-B3-A2
Unit Area	174 m2
Location	Block-1 Typical floors

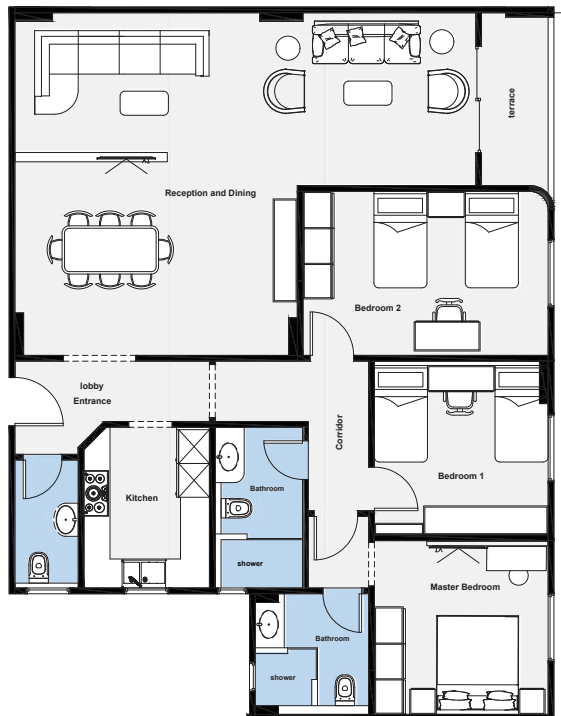
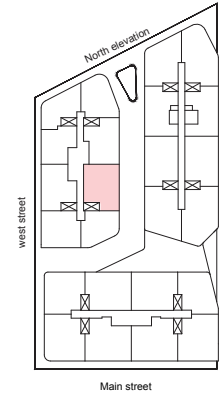


Spaces dimensions

- 1 Reception and Dining Ⓢ 7.83m X 3.58m
5.52m X 4.13m
- 2 Master Bedroom Ⓢ 3.60m X 3.60m
- 3 Master Bathroom Ⓢ 2.50m X 2.35m
- 4 Bedroom 1 Ⓢ 3.60m X 3.60m
- 5 Bedroom 2 Ⓢ 5.08m X 3.40m
- 6 Bathroom Ⓢ 3.33m X 1.80m
- 7 Kitchen Ⓢ 3.33m X 2.66m
- 8 Guest Bathroom Ⓢ 2.65m X 1.25m
- 9 Entrance Lobby Ⓢ 3.75m x 1.60m

Specifications

Unit Type	Residential Apartment
Unit Code	R-FT-B3-A3
Unit Area	190 m2
Location	Block-1 Typical floors

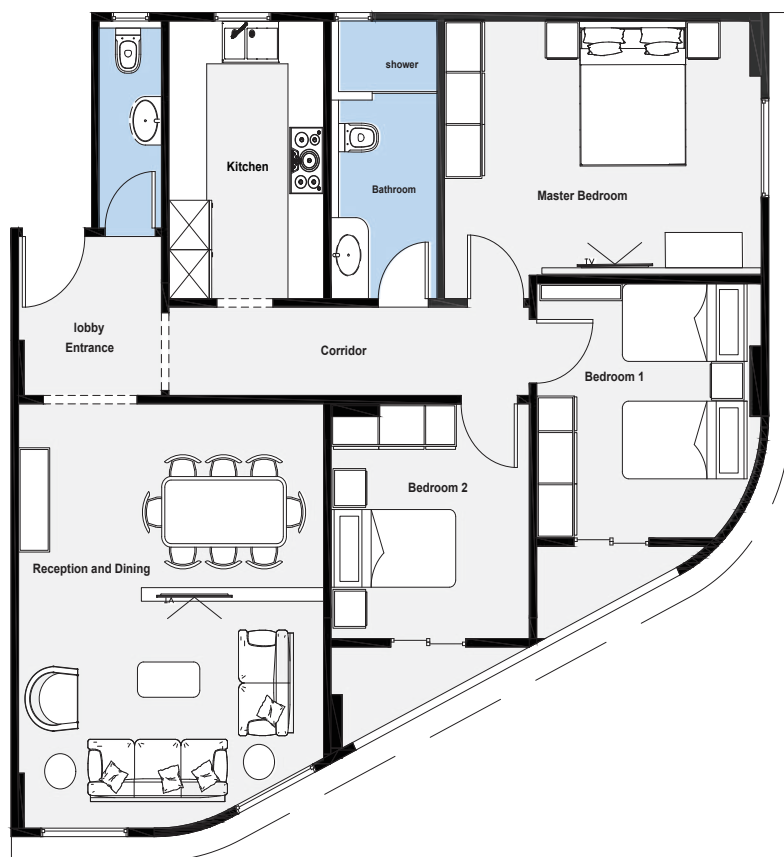
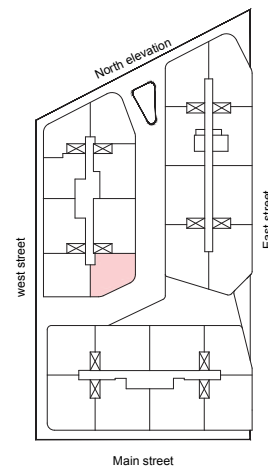


Spaces dimensions

- 1 Reception and Dining Ⓢ 9.55m X 3.60m
5.85m X 3.52m
- 2 Master Bedroom Ⓢ 3.60m X 3.60
- 3 Master Bathroom Ⓢ 2.50m X 2.35m
- 4 Bedroom 1 Ⓢ 3.60m X 3.60m
- 5 Bedroom 2 Ⓢ 5.08m X 3.40m
- 6 Bathroom Ⓢ 3.33m X 1.80m
- 7 Kitchen Ⓢ 3.33m X 2.71m
- 8 Guest Bathroom Ⓢ 2.65m X 1.25m
- 9 Entrance Lobby Ⓢ 1.68m X 1.88m

Specifications

Unit Type	Residential Apartment
Unit Code	R-FT-B3-A4
Unit Area	145m ²
Location	Block-1 Typical floors

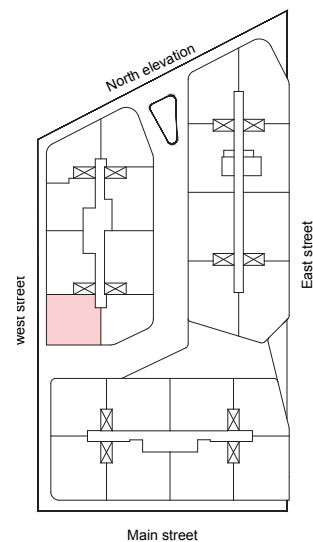


Spaces dimensions

- Reception and Dining** @ 4.90m X 6.00m
- Master Bedroom** @ 5.08m X 3.60m
- Bedroom 1** @ 3.60m X 3.60m
- Bedroom 2** @ 3.32m X 3.18m
- Bathroom** @ 3.93m X 1.70m
- Kitchen** @ 3.93m X 2.48m
- Guest Bathroom** @ 2.93m X 1.00m
- Entrance Lobby** @ 2.25m X 2.29m

Specifications

Unit Type	Residential Apartment
Unit Code	R-FT-B3-A5
Unit Area	176 m2
Location	Block-1 Typical floors

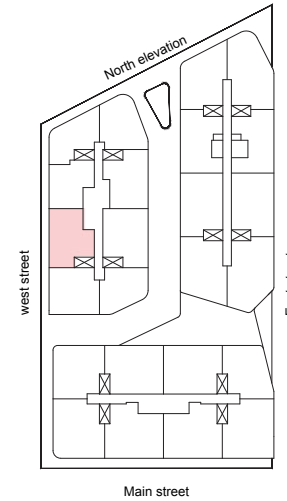


Spaces dimensions

- 1 **Reception and Dining** Ⓢ 7.30m X 6.00m
- 2 **Master Bedroom** Ⓢ 4.29m X 3.60m
- 3 **Bedroom 1** Ⓢ 4.11m X 3.60m
- 4 **Bedroom 2** Ⓢ 3.92m X 3.50m
- 5 **Bathroom** Ⓢ 3.93m X 1.85m
- 6 **Kitchen** Ⓢ 3.93m X 2.66m
- 7 **Guest Bathroom** Ⓢ 2.93m X 1.25m
- 8 **Entrance Lobby** Ⓢ 2.50m X 2.25m

Specifications

Unit Type	Residential Apartment
Unit Code	R-FT-B3-A6
Unit Area	171 m2
Location	Block-1 Typical floors

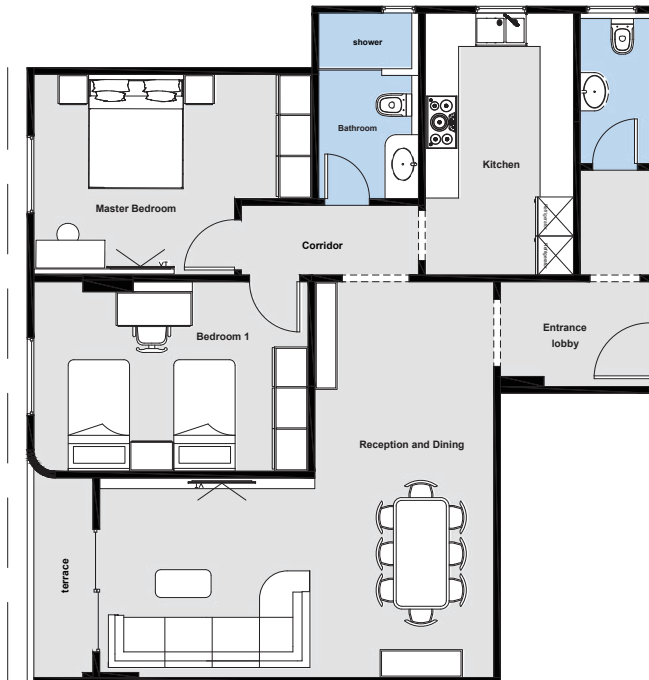
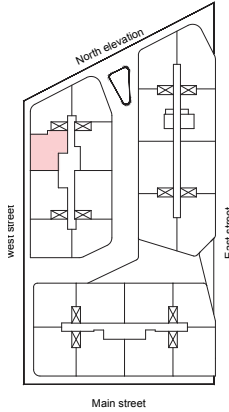


Spaces dimensions

- Reception and Dining** Ⓢ 7.07m X 3.60m
3.50m X 3.20m
- Master Bedroom** Ⓢ 3.60m X 3.60m
- Master Bathroom** Ⓢ 2.50m X 2.35m
- Bedroom 1** Ⓢ 3.60m x 3.60m
- Bedroom 2** Ⓢ 4.92m X 3.40m
- Bathroom** Ⓢ 3.33m X 1.85m
- Kitchen** Ⓢ 4.70m X 2.66m
- Guest Bathroom** Ⓢ 2.70m X 1.25m
- Entrance Lobby** Ⓢ 1.68m X 1.88m

Specifications

Unit Type	Residential Apartment
Unit Code	R-FT-B3-A7
Unit Area	144 m2
Location	Block-1 Typical floors

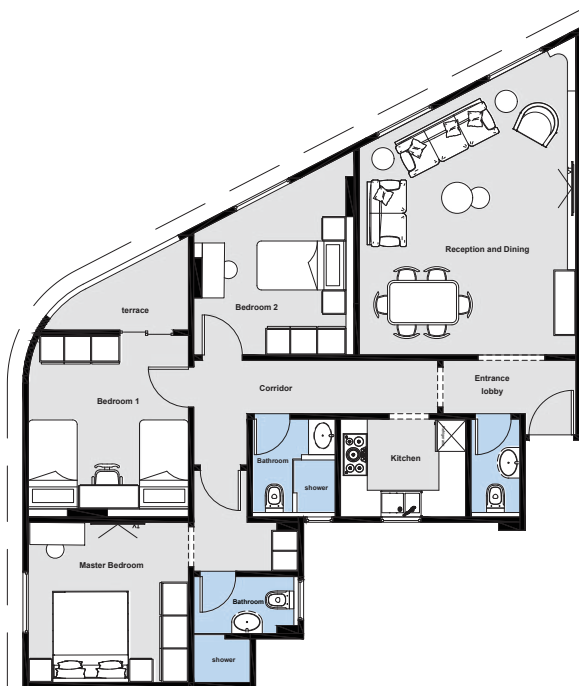
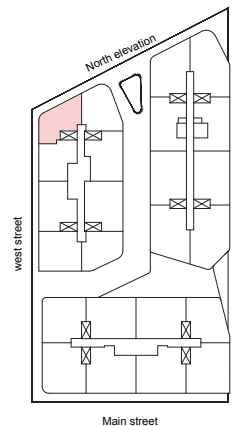


Spaces dimensions

- 1 Reception and Dining @ 7.07m * 3.58m
3.50m * 3.20m
- 2 Master Bedroom @ 5.00m * 3.60m
- 3 Bedroom 1 @ 3.40m x 4.92m
- 4 Bathroom @ 3.33m * 1.80m
- 5 Kitchen @ 4.70m * 2.66m
- 6 Guest Bathroom @ 2.70m * 1.25m
- 7 Entrance Lobby @ 2.68m x 1.88m

Specifications

Unit Type	Residential Apartment
Unit Code	R-FT-B3-A8
Unit Area	146 m2
Location	Block-1 Typical floors



Spaces dimensions

- 1 Reception and Dining @ 4.88m x 5.90m
- 2 Master Bedroom @ 3.60m x 3.60m
- 3 Master Bathroom @ 2.38m x 1.80m
- 4 Bedroom 1 @ 4.08m x 3.60m
- 5 Bedroom 2 @ 4.88m x 5.90m
- 6 Bedroom @ 2.20m x 1.86m
- 7 Kitchen @ 2.50m x 2.20m
- 8 Guest Bathroom @ 2.20m x 1.10m
- 9 Entrance Lobby @ 3.00m x 1.20m



Authentic Luxury Living

people of perla





people *of* perla



"Perla heights" defines serenity, authenticity, and exceptionality. It is built with perceptive attention to detail, the community can mediate, express gratitude, and share long-lasting memories with their beloved family.





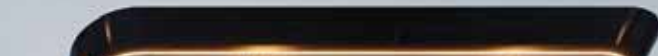
Luxury In Every Detail

people of perla





people of perla



more space
great view
paul johns
pale

zoo's
kfc
strawberry
most noble

more space
great view
paul johns
pale

zoo's
kfc
strawberry
most noble

costa cove



Commercial Spaces

A Pulse of Dining and Lifestyle

Commercial floors bring cafés, restaurants, shops, and services to life, creating a hub of activity and elegance for residents and visitors alike.

Administrative Pavilion

Workspaces that Inspire

Professional life finds its own rhythm here. Flexible offices and serviced spaces offer connectivity, productivity, and community – a place where work meets comfort and design.

Medical Pavilion

Healthcare within care

A complete floor dedicated to ensure quality medical care and clinics are always accessible. Peace of mind, convenience, and well-being coexist at the heart of Perla Heights.



Security, Community & Features

Life, Seamlessly Arranged

Life here unfolds effortlessly, like a story that's already been arranged for you. The gates open to a place where security never sleeps, cars find their spot with ease, and every corner invites you to linger a little longer.

Neighbors meet in shared spaces that feel both familiar and refined, while quiet details of sustainability work behind the scenes. It's a life that moves in rhythm, secured, connected, and beautifully in tune.

7/24 security and monitoring

Private parking for residents and visitors

Thoughtfully designed communal spaces

Every element contributes to a life that is both secure and effortlessly connected.





A life that becomes complete when design itself transforms into experience.

people *of* perla







All of this comes together with features that ensure life flows securely, sustainably, and seamlessly.



Designed by Sedeeq Designs

Where Design Becomes Living

Inside Perla Heights, every detail tells a story of balance – where elegance meets purpose, and comfort takes form in light, texture, and space. From the quiet rhythm of the materials to the soft harmony of colors and lines, each interior is crafted to make every moment feel considered, personal, and effortlessly beautiful.

This is not just where you live – it's where design becomes part of who you are.



From Roots to Rhythm, From Vision to Life

Perla Heights is a story of connection, growth, and enduring style – a place where every day is lived fully, elegantly, and seamlessly. It is not just a destination, but a lifestyle waiting to be owned.

people *of* perla

HOTLINE
17632



MARKLANES.

OWN A LIFE STYLE

